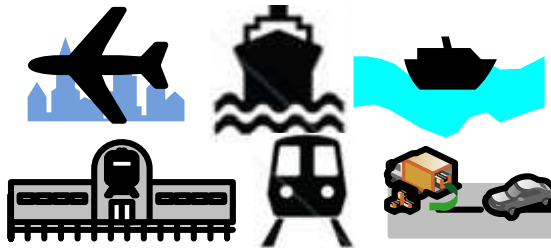


# ***TRANSPORT PLANNING & TRAFFIC ENGINEERING HOUSE (TPTEH)***

## ***COMPANY PROFILE***

***2015***



### ***Contact***

***Dr. Khaled Abbas – TPTEH FOUNDER & CHAIRMAN***  
***Tel: + 202 24535681 - Mobile: + 201067230608 - + 201099648951***  
***Email: [info@tpteh.com](mailto:info@tpteh.com) - [K.abbas@tpteh.com](mailto:K.abbas@tpteh.com)***  
***Web page: [www.tpteh.com](http://www.tpteh.com)***

## **TPTEH BACKGROUND**

*A number of senior experts/international consultants based in Egypt and abroad came together and decided to unite & pool their forces, efforts, expertise knowledge and skills to form TPTEH. TPTEH is a consultancy house bringing together highly specialised and experienced staff in all transport and traffic fields. TPTEH provides a multi-package of consultancy, applied research & studies, training and research programs.*

## **INTRODUCTION**

- *TPTEH staff has a long experience of advisory/expert/specialist/academic experience with government & academic organizations as well as with other consultants. Such experience involved leading & managing transport groups/ sections/departments & conducting consultancy projects/ studies/ research/ training/teaching in all fields of transport including: strategic, urban & transport planning, transport & traffic modelling, public transport, master plans, traffic engineering, traffic safety, parking, road & bridge engineering, geometric & hierarchy design, river & rail transport studies, airport & port studies, feasibility studies, traffic & environment impact assessment, logistics management, restructuring, privatization, PPP, performance evaluation & sustainable development. TPTEH is also experienced in restructuring, reform & management of transport industry.*
- *TPTEH professional staff has been involved in over 400 transport consultancy/research projects/studies with several organisations including Snowy Mountains Engineering Cooperation (SMEC Australia), Japan International Cooperation Agency (JICA), Roads & Transport Authority (RTA Dubai), Dar Al Handasah, Egyptian Ministry of Transport & its affiliate organisations, United Nations, World Bank as well as a number of Egyptian, Saudi, Lebanese & UK consultants.*
- *These projects were conducted in many countries including Australia, Egypt, Saudi Arabia, Lebanon, Turkey, Yemen, Algeria, Morocco, Dubai, Qatar, Kenya.*
- *TPTEH staff conducted more than 100 specialised training courses to professionals and senior managers from Australia, UAE, Egypt, Saudi Arabia, Kuwait, Bahrain and Ex-Soviet union Countries.*
- *Given the experience of its professionals TPTEH aspires to become one of the main sources of expertise in Transport in the Middle East that encourages, broadens & strengthens all areas in the field of transportation. TPTEH looks forward to serve as a gateway to transport knowledge & advancement by promoting the professional development, providing education & training, supporting stimulating research, developing public awareness, exchanging professional information and by maintaining a central point of reference and action.*

## **TPTEH VALUES**

*TPTEH has adopted a set of values including: Customer Focus, Professionalism, Teamwork, Cooperation, Excellence, Fairness, Transparency, Innovation, Perfectionism, Integrity, Confidentiality, Impartiality & Objectivity.*

## **TPTEH VISION**

*“TPTEH to become an influential source of knowledge, consultancy, research, education & training that is necessary for the improved efficiency, effectiveness, quality & sustainability of the transport sector as well as to act as a center of excellence and innovation for the transport industry at national, regional and international levels”*

## **TPTEH MISSION STATEMENT**

*“TPTEH to provide state of the art consultancy, applied research, training, knowledge and education for transport sectors in Egypt, the Middle East, Africa as well as for other countries and international organisations worldwide thus inducing improvement and promoting development of sustainable transport industries”*

## **TPTEH KNOWLEDGE**

- *In depth knowledge of transport planning & engineering sciences and fields related to the various transport systems (road, rail, river, ports, airports, passenger/freight transport and mass transit systems)*
- *In depth knowledge of transport strategy, policy, planning, travel demand modelling, feasibility studies, urban and master plan reviews, sustainable transport, etc.*
- *In depth knowledge of traffic engineering & management fields as related to traffic safety, parking, road hierarchy, traffic modeling, traffic management and control, travel demand management, traffic safety, traffic impact assessment, environment impact assessment, etc.*
- *In depth knowledge of public transport planning, evaluation and operation as well as of logistics management.*
- *In depth knowledge of system analysis, strategic planning, government restructuring and reform, project financing, PPP, Privatisation, sustainable development, capacity building*

## **TPTEH HARD SKILLS**

- *Strong quantitative and analytical skills*
- *Analytical and forward thinking*
- *Business Judgment & innovation*
- *Data collection, manipulation and proficiency in using suitable statistical data analysis software*

## **TPTEH SOFT SKILLS**

- *Leadership and team working skills*
- *Excellent communication, networking, presentation and writing skills.*
- *Group facilitation, presentation, and public speaking capabilities.*

## **TPTEH STRENGTH POINTS**

- *30 years of staff experience working in consultancy, training, teaching and research in various renowned western & Middle Eastern countries. Experience is based on its staff involvement in more than 400 projects, 50 professional training courses, 40 academic courses and more than 300 research papers in UK, Australia, Egypt, Saudi, Lebanon, Algeria, Morocco, Kuwait, Yemen, Qatar, Dubai, Turkey.*
- *Internationally recognized and credible reputation with TPTEH staff holding senior positions in consultancy, government and academia in western & Middle East countries including Australia, USA, Egypt, Saudi and Dubai.*
- *TPTEH staff conducted consultancy work for international and regional organizations including the UN organisations including ESCWA & UNECA, World Bank, JICA, DfID, European Union and others.*
- *TPTEH staff has a proven record of business development for achieving a high success rate in tendering/bidding, developing proposals, and winning projects from prestigious clients*
- *Reputable government experience*
- *Widespread network with professionals, senior government officials, consultants and academics from several countries including UAE, Saudi, Egypt, Kuwait, Australia, UK, USA, Netherlands, Denmark, Switzerland, Turkey, Germany, Lebanon.*
- *Pleasant approachable team with enormous communication and networking skills with technical, ethical and social professionalism*
- *Ability to recruit highly qualified and experienced professionals.*
- *Ability to maintain and form teamwork spirit*
- *Strong academic international credentials from UK, USA, Japan, Germany, Belgium*

## **TPTEH PROFESSIONAL SERVICES**

- *Providing Consultancy work and studies in strategic planning, urban & regional planning, transport policy, planning, modelling & management, public transport & logistics analysis & management, economic feasibility studies, traffic & environmental impact assessments, traffic safety & traffic engineering, management & operations, parking, road & bridge engineering, geometric & hierarchy design, river & rail transport studies, airport & port studies.*
- *Providing advisory services to government organizations including expert knowledge opinion, technical & managerial advise to decision makers on transport and traffic related policy, planning, financing, operations, safety, environmental, logistics, restructuring, reform, PPP, privatization & legal issues, performance evaluation and sustainable development.*
- *Managing multi-disciplinary consultant teams and providing technical steering and feedback on their work*
- *Developing and delivering professional transport and traffic related training and mentoring courses/programs.*
- *Professional managerial & leadership abilities with senior responsibilities*

## **TPTEH TRANSPORT COMMUNITY SERVICES**

- *Providing editorial and reviewer services for international journals/conferences*
- *Review and endorsement of membership application in several national and international scientific committees, institutions and organizations.*
- *Providing expert witness technical advice for courts and parliamentary hearings/investigations in several countries including Egypt, Australia.*
- *Members of panels for promotion of academic staff to Associate Professors and Professors.*
- *Members in panels of government staff selection for junior and senior positions.*
- *Members of international associations, engineering institutes, etc..*
- *Lecturing transport and traffic related engineering and planning courses for graduate & undergraduate levels as well as supervising graduate diploma projects, MSc and PhD thesis.*
- *Providing audit and examination services to ensuring quality and standards of postgraduate courses.*
- *Advisory services to assist in restructuring and documentation of courses and other necessary requirements for international review and accreditation panels.*
- *Providing a number of TV & radio interviews as well as journal and internet articles discussing issues in transport, traffic, safety, logistics, urban & regional planning etc...*
- *Contributing to think tank conferences by presentations & panel discussions.*

## **TPTEH AREAS OF EXPERTISE IN TRANSPORT & TRAFFIC**

- *Transportation Policy, Planning and Modeling*
- *Transport Surveys (Developing, Conducting, Management, Analysis)*
- *Logistics Analysis and Management*
- *Feasibility Studies of Transport Schemes*
- *Financing Transport Projects & Services*
- *PPP & Privatisation of Transport Infrastructure and Services*
- *Restructuring, Reform & Management of Transport Industry*
- *Transport for Mobility Handicapped*
- *Transport & Gender Issues*
- *Air Transport Planning*
- *Rail Transport Planning*
- *Port Transport Planning*
- *Container Handling Analysis*
- *Transport Legislations and Regulation*
- *Budget Planning & Management of Transport Organisations*
- *Cost Modelling, Pricing Policies and Fare/fee Determination*
- *Performance Evaluation of Transport Activities*
- *Traffic Studies (Surveys, Analysis & Forecasts)*
- *Traffic Management and Control*
- *Congestion and Travel Demand Management*
- *Environmental Impact Assessment of Transport Schemes*
- *Traffic Impact Assessment Studies*

- *Infrastructure Capacity and Level of Service Analysis*
- *Traffic Accidents & Safety*
- *Railway Safety*
- *Sustainable Development (Smart Growth)*
- *Transport Education and Training*
- *Public/Freight Transport Studies*
- *Market Analysis/ Demand Prediction for Transport Organisations*
- *Planning of Transport Services and Marketing*
- *Fleet Procurement Planning*
- *Fleet Operation Planning*
- *Fleet Maintenance Planning*
- *Inventory Planning in Transport Organisations*
- *Transport Information and Decision Support Systems*
- *Environmental Policy*
- *Land Use Management*
- *Master Plan Reviewing*
- *Road Hierarchy Studies*
- *Parking Studies*
- *Capacity Analysis*
- *Transport in Developing Countries*
- *Transport and the Environment*
- *Infrastructure Planning and Management*
- *Prediction of Equivalent Single Axle Loads*

### ***TPTEH Areas of Expertise in Other Transport Related Areas***

- *Policy Design and Analysis*
- *System Analysis & System Dynamics*
- *Developing Simulation Models*
- *Operations Research Techniques*
- *Environmental Impact Assessment (EIA)*
- *Deregulation and Privatisation*
- *Parametric/Nonparametric Statistics*
- *Management of Organisations*
- *Managerial Leadership*

### ***TPTEH Compliance with Ethical & Professional Commitments***

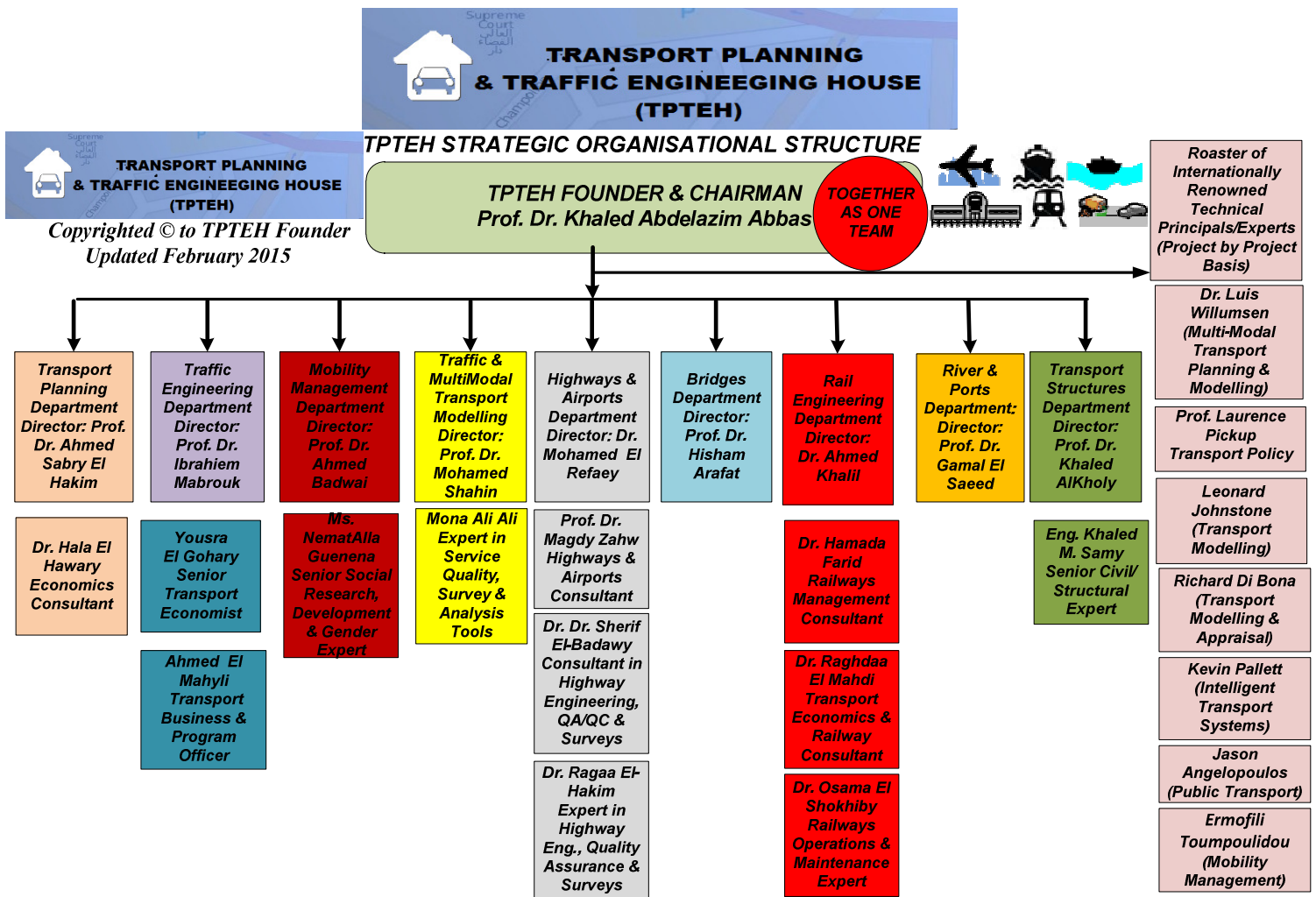
*TPTEH members agreed to comply with a number of internationally standard ethical and professional commitments including non disclosure – confidentiality – bribery (advantage) – conflict of interest – professionalism etc. In addition TPTEH is committed to diversity and will promote diversity for all employees, workers and applicants and shall adhere to such a policy at all times. TPTEH will treat everyone equally irrespective of gender, marital status, age, disability, colour, race, ethnic origin, religion. TPTEH is committed to providing training for its entire staff in equal opportunities practice. TPTEH will ensure that each candidate is assessed only in accordance with the candidate's merits, qualifications and abilities to perform the relevant duties required.. TPTEH does not accept any form or intention of discrimination. TPTEH is committed to providing a work environment free from unlawful harassment on grounds of gender, marital status, age, disability, colour, race, ethnic origin, religion.*

### ***TPTEH ORGANISATIONAL STRUCTURE***

*TPTEH is the coming together of a number of senior experts/consultants with all their prior experience pooling to achieve a multi-package of consultancy, applied research & studies, training and research programs, Currently TPTEH has 8 main departments, namely (See Figure):*

- |   |   |
|---|---|
| <i>1. Transport Planning Department</i>                         | <i>2. Traffic Engineering Department</i>                          |
| <i>3. Mass Transit &amp; Non Motorised Transport Department</i> | <i>4. Traffic &amp; Multimodal Transport Modelling Department</i> |
| <i>5. Highways &amp; Airports Department</i>                    | <i>6. Bridges Department</i>                                      |
| <i>7. River &amp; Port Department</i>                           | <i>8. Transport Structures Department</i>                         |

*In addition TEPTTEH is cooperating with a number of internationally renowned experts on a project by project basis including Dr. Luis Willumsen as Chief Technical Principal in Multimodal Transport Planning & Modelling, Prof. Laurence Pickup as Chief Technical Principal in Transport Policy, Leonard Johnstone as Chief Technical Principal in Transport Modelling, Richard Di Bona as Chief Technical Principal in Transport Modelling & Appraisal, Kevin Pallett as senior expert in Intelligent Transport Systems, Jason Angelopoulos as senior expert in public transport, Ermofili Toumpoulidou as expert in mobility management. . TPTEH is also supported by a team of technical and administrative staff. TPTEH is also currently engaged in a number of joint ventures with consultancy offices in Egypt (Pioneer, Sadco & Environics), in UK with Vectos – Luis Willumsen, in Germany with Red Team, GIZ, in Netherlands with Key Point - Panteia, in Denmark with NTU and in Lebanon with SETS.*



**Figure: TPTEH STRATEGIC ORGANISATIONAL STRUCTURE**

**TPTEH FOUNDER & CHAIRMAN  
DIRECTORS – SENIOR STAFF & EXPERTS**

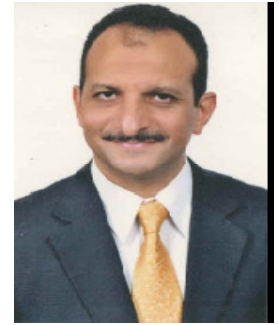
TPTEH staff includes TPTEH founder & chairman Prof. Dr. Khaled Abbas as well as directors of the main 8 departments. TPTEH is supported by a number of experts, senior and junior technical and administrative staff. Several of TPTEH staff are PhD holders in their specialties from UK, USA, Japan, Germany & Belgium. TPTEH chairman, directors, senior staff and international technical principals and experts are presented below:



**Prof. Dr. Khaled Abbas (Egypt-USA-UK-Australia-Saudi-Dubai)**

**TPTEH Founder & Chairman ([K.abbas@tpteh.com](mailto:K.abbas@tpteh.com))**

Dr. Khaled Abbas has over 29 years experience in transportation consultancy, research, training & education. He was involved in more than 150 transport consultancy projects with Snowy Mountains Engineering Corporation (SMEC Australia), Roads & Transport Authority (RTA Dubai), Dar Group (Beirut & Cairo), Egypt National Institute of Transport (ENIT), United Nations Economic Commission of Africa & ESCWA, World Bank & European Union as well as with a number of Egyptian, Saudi & UK consultants. These projects were conducted in Australia, Egypt, Saudi Arabia, Lebanon, Turkey, Yemen, Algeria, Morocco, Dubai, Qatar, Kenya. He published more than 95 journal articles & conference papers, taught more than 26 specialised transport academic courses, designed & delivered more than 45 training courses to professionals/ senior managers from Egypt, Saudi Arabia, Kuwait, Bahrain and Ex Soviet union Countries. Dr. Abbas expertise include: Transport planning & modelling, transport safety, public transport & logistics management, traffic management, impact & feasibility assessments (traffic, environmental, financial & economic), performance evaluation, sustainable development, restructuring, reform & management of transport industry, women transport. He is a Fellow of Institute of Engineers Australia & past Chair of Transport Branch-Canberra. He is a member of several editorial boards including Advances in Transportation Studies journal by Univ. of Rome.



**TPTEH DIRECTORS**

**Prof. Dr. Ibrahim Mabrouk (Egypt-Japan)**

**Director Traffic Engineering Department ([I.mabrouk@tpteh.com](mailto:I.mabrouk@tpteh.com))**

Dr. Ibrahim Mabrouk has more than 40 years experience in transportation planning & traffic engineering, covering projects in Egypt, Saudi Arabia & Japan with practical experience in national transport planning & policy, rural & urban transport studies & public transport studies, highway planning & design. He has teaching, training & research experience in transportation planning, traffic engineering, highway Eng. & Railway Eng at Egyptian universities & overseas. He is an external editor at National Authority for Quality Assurance & Accreditation of Education. He has long practical experience in academic managerial works.



**Prof. Dr. Ahmed Sabry El Hakim (Egypt-Japan)**

**Director Transport Planning Department ([A.elhakim@tpteh.com](mailto:A.elhakim@tpteh.com))**

Dr. El-Hakim, has over 35 years experience in universities & consulting firms as project manager/team leader. He is capable to handle various projects under different stages & nature & make critical eng.& managerial judgment. His past experience involved leading numerous projects & studies to successful completion. He gained a reputation with organizations like (MOT, MOHULA, GARBLT, TPA, GOPP, ENR, NAT, etc) in Egypt & universities & research centers like Osaka, Al-Azhar Universities & Academy of Scientific Research in Egypt. He has excellent records with consulting firms such as Madia Consulting Group (MCG), Engineering Consultant Office (ECOGIM), Egyptian Consultants Consortium, Wilbur Smith & Associates (AAW) Consulting Engineers & Katahira & Eng. International (KEI), AAW, & Nama. Dr. Hakim had assignments as JICA Expert in several developing countries & is engaged in almost all JICA transport studies in Egypt that make him well known active expert in transport issues including all modes of transport



**Prof. Dr. Ahmed Elbadawy (Egypt-Saudi)**

**Director Mobility Management Department ([A.elbadawy@tpteh.com](mailto:A.elbadawy@tpteh.com))**

Dr Ahmed Elbadawy has over 35 years' experience in transportation planning and traffic engineering research, consultancy & education. He was involved in more than 100 projects in Egypt, Canada, and Saudi Arabia. He worked in many fields including Public Transport, Traffic Engineering, Urban Transport Planning, Intercity Transport Planning, Pedestrian Movement Analysis, Transport Economics, Traffic Modeling and Management, Evaluation of transport Projects, and Application of transport software packages in transportation. He published more than 45 journal articles & conference papers, taught more than 10 specialised transport academic courses.



**Prof. Dr. Gamal El Saeed (Egypt)**

**Director River & Ports Department ([G.elsaeed@tpteh.com](mailto:G.elsaeed@tpteh.com))**

Dr. Elsaeed has Over 26 years experience in feasibility studies, conceptual planning, cost analysis, site investigation & soil analysis, conceptual design, detailed design, specifications & estimates for bid invitation, evaluation of bids, preparing client-contractor contract, construction supervision, material testing & quality control. He is a member of several professional societies, Egyptian Society of Engineers, Past International Director, Board member of the American Society of Civil Engineers (2001-2004), Central Dredging Association & American Chamber of Commerce in Egypt. He is also active in public service front in Egypt, he served as Chair of Public Works Committee of elected Local Council for Cairo for a period of 12 years.



**Prof. Dr. Khaled AlKholly (Egypt)**

**Director Transport Structures Department ([K.alkhoy@tpteh.com](mailto:K.alkhoy@tpteh.com))**

Dr Khaled El Kholly has over 31 years experience in design and supervision consultancy for different transportation structure components as well as for oil and gas projects, residential, administrative, and industrial projects. His experience also involves research, training and education. El Kholly is known for his dedication & accuracy in engineering design & supervision.



**Dr. Mohamed Shahin (Egypt-Germany- Saudi) ([M.shahin@tpteh.com](mailto:M.shahin@tpteh.com))**

**Director Traffic & Multi-Modal Transport Modelling Department**

Dr. Mohamed Shahin has over 22 years experience in transportation consultancy, research, training & education. Dr. Shahin experience spans over Transport Planning and Transport Modelling, Traffic Eng. & Microscopic Modelling, Transport Master Planning, Design of Rapid Transit Systems & Public Transport Facilities, Transportation planning & operations for railway systems. His experience involves conducting consultancy projects in Egypt, Saudi Arabia, Kuwait, UAE, Qatar, Lebanon, Turkey, Yemen, Algeria, Morocco, and Nigeria with CGCE (Egypt – Germany), Dar Group (Beirut & Cairo), HACON, Schnüll-Halle, TRANSVER (Germany) & a number of Egyptian, Saudi & UK consultants. He is a Certified Trainer for VISUM Software– PTV



**Prof. Dr. Hisham Arafat (Egypt-Saudi)**

**Director Bridges Department ([H.arafat@tpteh.com](mailto:H.arafat@tpteh.com))**

Dr. Hisham Arafat has over 25 years experience in transport structures design particularly bridges. Since 2007 he is a member of IABSE (International association of Bridges and Structural Engineering), and also a member of the scientific committee - new Egyptian Code for Bridges, overpasses and underpasses. He published more than 25 papers in International journals and conferences associated to geotechnical, structural and bridges issues. He has also supervised a number of M.Sc. and PhD theses on the subject.



**Dr. Mohamed Abdel Halim El Refaey (Egypt)**

**Director Highways & Airports Department ([M.elrefaey@tpteh.com](mailto:M.elrefaey@tpteh.com))**

Dr. Mohamed El Refaey has more than 33 years' experience in Highways and Airports Engineering projects. His experience also involves research, training and education. El Refaey is known for his dedication & accuracy in highway and airport engineering design & supervision.



**Dr. Ahmed Abdel Moamen Khalil (Egypt – Saudi - Libya)**

**Director Railway Engineering Department**

Dr. Ahmed A. Khalil has more than 25 years of practical experience in design, management and construction of railways. He has professional experience in ballasted and ballastless railway tracks inside tunnels, in the free field, depots and workshops. Also, he has the experience in design and construction of permanent ways, artificial works of high speed and conventional railways in Egypt and Saudi Arabia. In addition to the practical experience he has worked in the field of technical research and lecturing of railway, highway engineering in many universities and institutes.



**Dr. Magdy Zahw (Egypt, Saudi)**

**Highways & Airports Consultant ([M.zahw@tpteh.com](mailto:M.zahw@tpteh.com))**

Dr. Magdy Zahw has more than 25 years experience in design of many highways projects in Egypt and Saudi Arabia as well as teaching and research experience of topics related to highway engineering, transportation, traffic engineering and railway engineering at Egyptian universities and King Saud university in KSA.



**Dr. Raghdaa Mahmoud El-Mahdi (Egypt)**

**Transport Economics & Railways Consultant ([R.elmahdi@tpteh.com](mailto:R.elmahdi@tpteh.com))**

Dr. Raghdaa El-Mahdi has more than 23 years experience in Transport Economics, Investment Appraisal, Transport Planning, Railway Planning & Operations, Passenger Transport, Transport Modelling, Mathematical & Statistical Analysis. She was engaged in designing, conducting & analysis of several passenger stated & revealed preference surveys as well as other passenger counts & surveys in various consultancy projects including railways. She was also involved in designing & conducting more than 40 training courses to Egyptians & other Arab middle level managers in various transport sectors. Among such courses are: Operation of Passenger Transport-Investment Appraisal of Transport Projects-Transport Economics-Costing & Pricing-Evaluation of Performance of Transport Companies-Operation of Freight Transport-Finance of Transport Projects



**Dr. Sherif El-Badawy (Egypt – USA)**

**Consultant in Highway Engineering, QA/QC & Surveys**

Dr. Sherif El-Badawy has more than 18 years experience in teaching and technical research related to pavement design, material characterization and modelling, traffic surveys & characterization and distress predictions. He has more than 15 years experience in geometric and structural design of roads in many countries including Egypt, KSA, and Libya, and Nigeria He serves as a TRB Committee Member on Flexible Pavement Design (AFD60). He is also an elected board member of the Middle East Society of Asphalt Technologists (MESAT). He published more than 45 technical papers and research reports. Dr. El-Badawy expertise also extends to the construction quality control and testing as well as evaluation of distress surveys and evaluation of pavement materials.



**Dr. Ragaa El-Hakim**

**Expert in Highway Eng., Quality Assurance & Surveys**

Dr. Ragaa El-Hakim has experience in teaching graduate and undergraduate at the faculty of engineering. Her technical research is related to pavement design & traffic safety, She has experience in geometric and structural design of roads as well as quality assurance and surveys. She has extensive experience in quality



**Dr. Hala El Hawari (Egypt - Germany)**

**Economics Consultant ([h.hawari@tpteh.com](mailto:h.hawari@tpteh.com))**

Dr. Hala El Hawari has a strong experience in economics marketing studies, strategy & policy formulation, strategic planning, training, teaching, research, & Business-modernization in various industries in private & public sectors both in Germany & Egypt. Dr. El-Hawari has expert-level knowledge in field studies with ability to deliver high performance analyses. She is a member in Chamber of Food Industries, German Chamber of Commerce, Leutzscher Gespräch, & World Family EV Leipzig Germany



**Eng. Khaled Samy (Egypt)**

**Senior Civil/Structural Expert ([K.samy@tpteh.com](mailto:K.samy@tpteh.com))**

Eng. Khaled Samy has over 33 years experience in the design and supervision of civil structures including concrete, steel and composite structures for administrative, residential, industrial, oil & gas and petrochemical projects.



**Ms. Nemat Guenena (Egypt-Sweden) ([N.guenena@tpteh.com](mailto:N.guenena@tpteh.com))**

**Senior Social Research, Development & Gender Expert**

Ms. Nemat Guenena has over 30 years of experience in Social Research, Development and Gender. She was involved in numerous consultancies. These projects include poverty alleviation strategies and interventions, enterprise development and microfinance strategies and interventions, community upgrading, water and wastewater, among others. Ms. Guenena has been providing consultancy services to UN organizations, bilateral & multilateral donors, government, non-government & private sector organizations in fields of qualitative & quantitative research, project evaluation & project formulation. Ms. Guenena is the senior gender advisor for Canada's Department of Foreign Affairs & Trade (DFADT) since 2010 & she has a number of publications in the field of social movements, gender, and development.



**Dr. Osama Elshokhiby (Egypt)**

**Railways Operations & Maintenance Expert ([O.Elshokhiby@tpteh.com](mailto:O.Elshokhiby@tpteh.com))**

Dr. El Shokhiby has long experience in railways operations and maintenance working for different capacities at the Egyptian national Railways. He also has experience in teaching and training on various topics and subjects as related to the railways industry.



**Yousra Mohamed El Gohary (Egypt)**

**Senior Transport Economist ([Y.elgohary@tpteh.com](mailto:Y.elgohary@tpteh.com))**

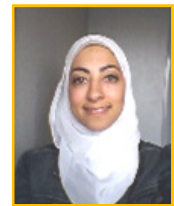
Yousra El Gohary has more than 10 years experience at Egyptian National Institute of Transport participating & assisting in conducting transport studies & research as well as in teaching for graduate students, training of transport professionals. She has experience in feasibility studies for Railway & Metro, in designing questionnaire, survey data analysis in projects such as: Development of Rail Freight Transport- Pedestrian Attitudes in Greater Cairo and Their Impact on Safety and Traffic Flow.



**Mona Ali Ali (Egypt)**

**Expert in Service Quality, Survey & Analysis Tools**

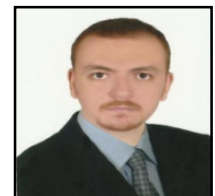
Mona Ali Ali is a graduate of the American University in Cairo, Mechanical Engineering Department, specializing in materials, manufacturing, and industrial engineering. Her MBA thesis was on measuring service quality in public services. She is experienced in a number of survey and analysis tools including The SERVQUAL, SPSS & Excel.



**Ahmed Mohamed Elmahyli (Egypt)**

**Transport Business & Program Officer ([A.elmahyli@tpteh.com](mailto:A.elmahyli@tpteh.com))**

Ahmed Elmahyli has over 2 years experience at the Egyptian National Institute of Transport participating and assisting in conducting transport studies and research as well as in teaching for graduate students and training of transport professionals.



**Bahiga Sayed (Egypt)**

**Surveys & Focus Groups Management Specialist**

Bahiga Sayed has over 10 years' experience in Surveys & Focus Groups, Currently she works as Specialist with Central Agency for Public Mobilization and Statistics (CAPMAS). She has experience in managing and supervising all logistics related to conducting surveys and focus group and other methods of opinion data collection. She was involved in several social and gender related studies.





## **TPTEH Roster of Internationally Renowned Technical Principals**

**Dr. Luis Willumsen (UK) ([L.willumsen@tpteh.com](mailto:L.willumsen@tpteh.com))**

### **Chief Technical Principal - Multi-Modal Transport Planning & Modelling**

Dr. Willumsen has over 35 years of experience as a consultant, transport planner & researcher with a distinguished academic career. He is an internationally recognised authority in Transport and Traffic Modelling. Based in Britain since 1975, he was a researcher and lecturer at Leeds University and then at University College London. Luis was a Director of Steer Davies Gleave having joined it full-time in 1989 with a special responsibility for technical development; he left that company to set up this consultancy in December 2009. He is co-author of “*Modelling Transport*”, a book published by Wiley and now in its fourth edition. He has written over 50 technical papers and book chapters. His experience covers large transport modelling assignments, direction of numerous traffic & revenue projection projects for the private sector, financial institutions or government sponsors, different types of rapid transit services including operational design of Transmilenio in Bogota; he has experience in Congestion Charging & Area Traffic Control systems. Luis delivered projects in some 30 countries.



**Prof. Laurence Pickup (UK) ([L.pickup@tpteh.com](mailto:L.pickup@tpteh.com))**

### **Chief Technical Principal - Transport Policy**

Professor Pickup, for over 35 years, has been the gender aspects of mobility; and the impact of the relatively lower mobility of women than men on their access to opportunities and life chances. For 32 years, his has predominantly been in a European perspective; for the last 18 years with the New Member states and Candidate countries of the EU. Professor Pickup’s work involves two roles: consultant and academic. As a consultant, he is the International Director for Vectos; a planning consultancy based in central London; although his working base is central Italy. His academic role is as Professor of European Transport Policy at the Centre for Transport Research at Aberdeen University, Scotland. His work is assessment of policy effectiveness and the evaluation of new and proposed schemes; and awareness-raising strategies. His experience involves both consultancy projects to engage with citizens and stakeholders; and statistical analysis.



**Leonard Johnstone (Australia) ([L.johnstone@tpteh.com](mailto:L.johnstone@tpteh.com))**

### **Chief Technical Principal-Transport Modelling**

Mr. Johnstone has over thirty years of practical experience in diverse transportation development & planning projects augmented by his Chartered Professional Engineering status in Australia. His professional background includes multi-modal transportation planning (short, medium & long-term), traffic engineering, economic & financial feasibility analyses, optimization & development of public transport strategies (bus, light rail, heavy rail). Projects have focused on development of analytical tools such as transport models to simulate the mathematical impact of transport infrastructure projects. Mr. Johnstone has completed assignments in Eastern Europe, Asia, Australia, Middle East and United States. He was responsible for the development of city transport models in Cairo, Dhaka, Bangkok & Australia. He is considered an expert in the use of major transport planning software packages such as CUBE/TRIPS, STRADA, EMME/2 and UTPS. He is also familiar with other major transport modeling packages such as Saturn and VISUM. In particular, he received an award for an excellent presentation at the CUBE Annual User Conference for his presentation on the Integration of Economic Evaluation into the Transport Model. He is very familiar with the development and implementation of transport models in particular in the evaluation of transport infrastructure projects.



**Richard Di Bona (UK & Hong Kong) ([R.dibona@tpteh.com](mailto:R.dibona@tpteh.com))**

### **Chief Technical Principal-Transport Modelling & Appraisal**

Richard has Over 20 years’ experience in the transport sphere, spanning over 25 countries/ territories across four continents, covering demand forecasting, demand-side risk analysis, economic analysis, advising on performance improvement, capability development, as well as advising on transport policy. Covers urban, inter-urban and international passenger and freight transport. Substantial experience in infrastructure evaluation, patronage/ revenue forecasts, project economic, financial and risk analysis. Advised developers, investors, lenders, government and development agencies on project feasibility and risk, as well as on transport and business strategy. This includes due diligence analysis for project finance (re-)structuring, BOT bids, stock market listings, M&A and bond issues. Assisted infrastructure operators on performance enhancement and provided consultancy services to potential start-ups in the transport sector. Provided Expert Testimony



## ***TPTEH Roster of Technical Experts***

**Kevin Pallett (UK) ([K.pallett@tpteh.com](mailto:K.pallett@tpteh.com))**

### ***Senior Expert - Intelligent Transport Systems***

Kevin has over 20 years' experience, spanning over more than 20 countries/ territories in intelligent transport systems. He is an experienced Project Director and Consultant offering strategic advice in regards to the efficiency and operations of public transport services. His specialties include large system integration projects and design in all aspects of transport operations including: smartcard ticketing; real time passenger information systems; dynamic bus stations; traffic light priority; location based advertising for increasing revenue aside from conventional ticketing; operational planning systems; HR systems; franchise performance monitoring; management information.



**Jason Angelopoulos ([J.Angelopoulos@tpteh.com](mailto:J.Angelopoulos@tpteh.com))**

### ***Senior Expert - Public Transport***

Jason Angelopoulos has more than 17 years experience with a strong strategic and in-depth focus in managing, implementing and reviewing policy, strategic, business, financial, operational plans and business change in the transport industry. He has been exposed in and driven the entire planning process in projects and action plans as an advisor strategy director, board member of a transport service provider, associate manager and consultant. He applied his analytical skills in projects involving public transport, major events transport, business, operational, financial modelling and costing, and aligning IT requirements and business processes and economic / investment evaluations. Combining a strong operations and finance background, sound understanding of core operating processes and excellent leading and communication skills, he has led / participated in more than 45 management consulting projects and major business development initiatives in several countries.



**Ermofili Toumpoulidou ([E.Toumpoulidou@tpteh.com](mailto:E.Toumpoulidou@tpteh.com))**

### ***Expert – Mobility Management***

Ermofili has more than 11 years experience in traffic analysis and mobility management. She was involved in the preparation of supporting documents (transport assessments, transport statements, travel plans) for major mixed-use development projects in the UK. She carried out trip generation as well as junction and roundabout capacity analyses and has experience in using transport modelling software (PICADY, ARCADY, LINSIG, TRANSYT). Ermofili has also carried out research studies in mobility management and Sustainable Urban Mobility Plans as part of her work in Transport Learning and Advance EU (Intelligent Energy Europe) funded projects, supporting practitioners to develop better solutions for urban transport systems in order to improve citizens' mobility.

